

Beginners Classic

WHAT ARE SEMI PERMANENT EYELASH EXTENSIONS?

- Semi permanent synthetic or natural fiber lashes that are connected to a natural lash with a bonding adhesive.
 - They lengthen, thicken & accentuate the natural lash line.
- Each extension is connected to a single natural lash giving a totally natural or glamorous look.

ON COMPLETION OF THIS COURSE YOU WILL:

- Be able to prepare for semi permanent eyelash extensions.
- Be able to apply semi permanent eyelash extension treatment

R8000

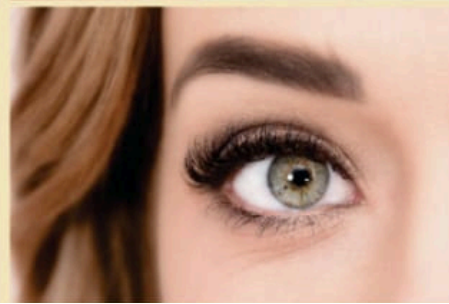
*This Includes your full classic kit & one day training
6 Case Studies To receive International Certificate)*



Your Kit

Mixed Lash Trays
Eyelash Shampoo
Cream Remover
Primer
Glue
Eyelash Tweezers
Mascara Brushes
Lint Free Applicators
Gel Pads

Eyelash Rulers
Disposable Glue Plates
Micro or Trans pore Tape
Glass Lash Slate
Micro Brushes
Classic Manual
Pen
Attendance Certificate



Theory, Demonstration, Practical & Light Lunch Included



Beginners Volume

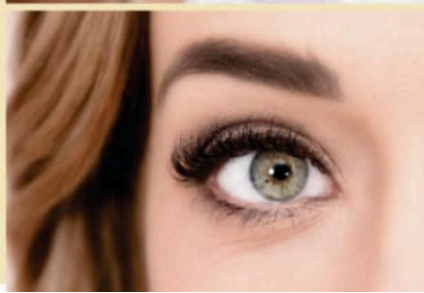
KEY POINTS IN CREATING VOLUME ARE:

- How to fan lashes correctly
- How to place lashes correctly
- How many lashes are safe to use



R6000

*This Includes your Volume kit & one day training
3 Case Studies To receive International Certificate)*



Your Kit

Mixed Lash Trays
Gold Tweezer
Disposable Glue Plates
Glue
Glass Lash Slate
Lash Ruler
Gel Pads

Pen
Volume Manual
Certificate of Attendance

Must have completed a Classic or Hybrid Course

Bring your Classic Kit with

Theory, Demonstration, Practical & Light Lunch Included

Beginners Classic & Hybrid

WHAT ARE CLASSIC & HYBRID EYELASH EXTENSIONS?

The word is given for the multi lash technique used to create a combination eyelash extension set, by using super fine lash extensions, (2D-3D Fans)

We can use more lashes by creating fans and placing them on the natural lashes in between classic lash extensions to create a more fuller yet still natural look.

ON COMPLETION OF THIS COURSE YOU WILL:

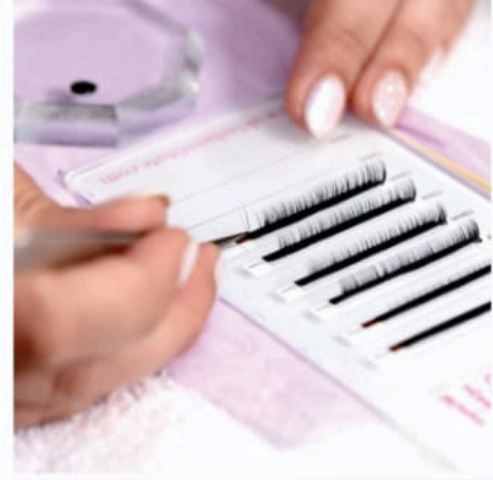
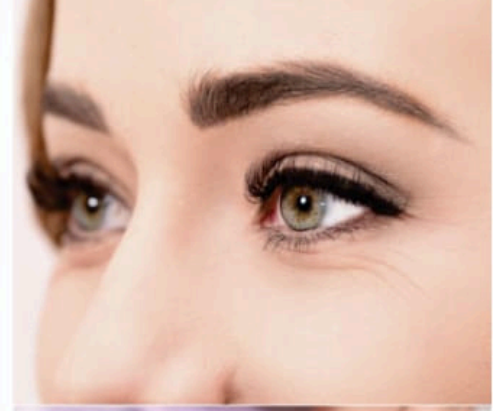
Be able to prepare for semi permanent eyelash extensions.

Be able to apply semi permanent eyelash extension treatment

Create & apply 2D-3D Fans in between classic lash extensions

R13 500

*This Includes your full classic kit & two day training
6 Case Studies To receive International Certificate)*



Your Kit

Mixed Lash Trays
Eyelash Shampoo
Cream Remover
Eyelash Primer
Glue
Eyelash Tweezers
Mascara Brushes
Lint Free Applicators
Gel Pads

Eyelash Rulers
Disposable Glue Plates
Micro or Trans pore Tape
Glass Lash Slate
Micro Brushes
Classic Manual
Notepad
Pen
Attendance Certificate

Theory, Demonstration, Practical & Light Lunch Included

